

**Exhibit 01 -
Photos of the Pennichuck
Watershed**

An aerial photograph showing a landscape with dense green forest. A road runs horizontally across the middle. Below the road, there is a small cluster of buildings and parking lots. To the right of this, a stream flows through the forest. Further to the right, a large area of land has been cleared, showing sandy soil and some sparse vegetation. The text labels are overlaid on the image.

August 2005

**Western Edge of
Pennichuck
Watershed**

Peacock Brook

**Sommerfield Condo
development with 8
million gallons of
septic waste**

Bon Terrain Well

August 2005

North

**Amherst Street
in Amherst**

**Webb with
big fuel tank
for trucks**

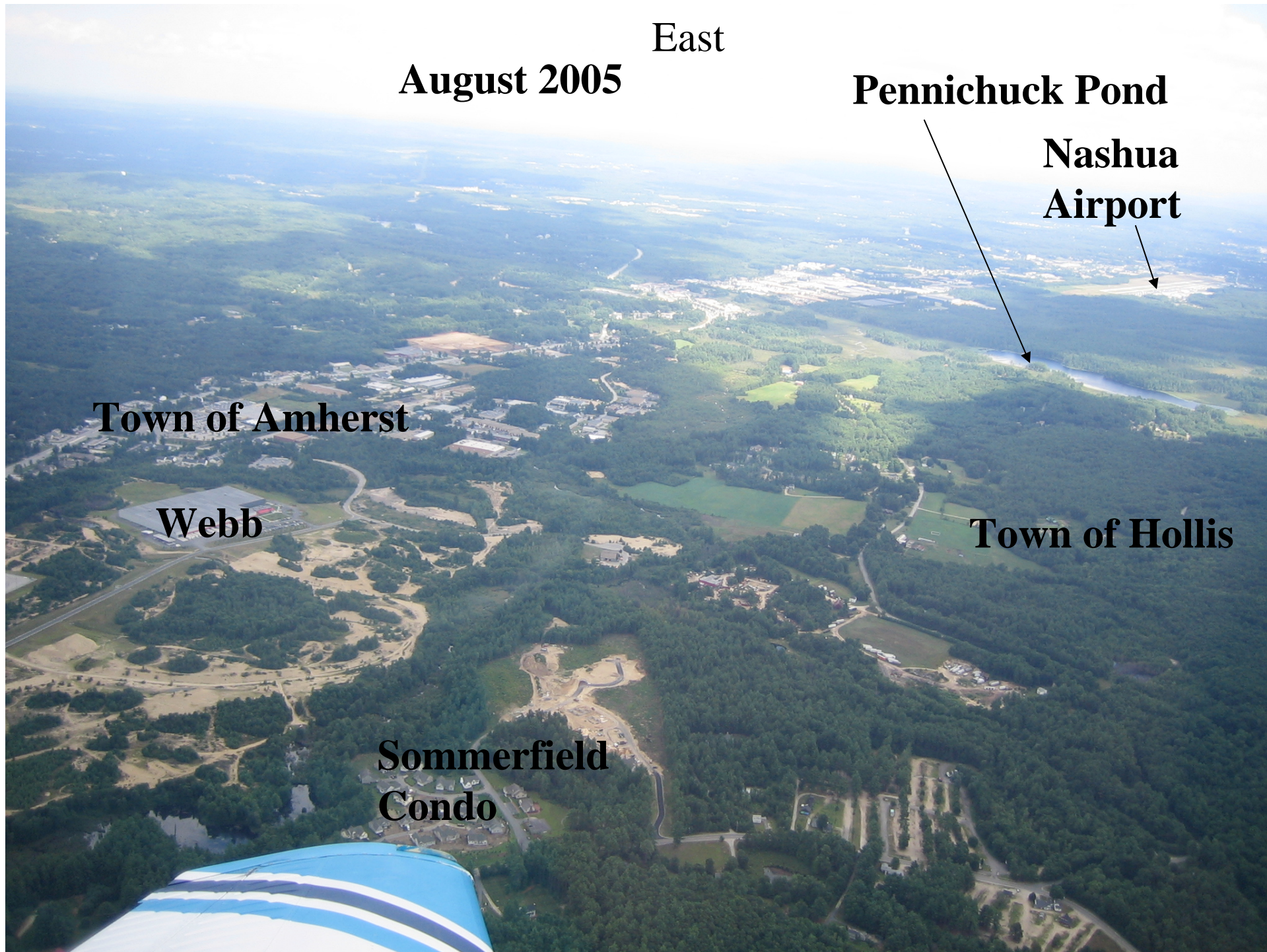
Bon Terrain Aquifer

**Sommerfield Condo
with 8 million
gallons of septic
discharge**

Peacock Brook

**Witches
Brook**





East

August 2005

Pennichuck Pond

Nashua
Airport

Town of Amherst

Webb

Town of Hollis

Sommerfield
Condo

Southeast

August 2005

**Amherst St
Nashua**

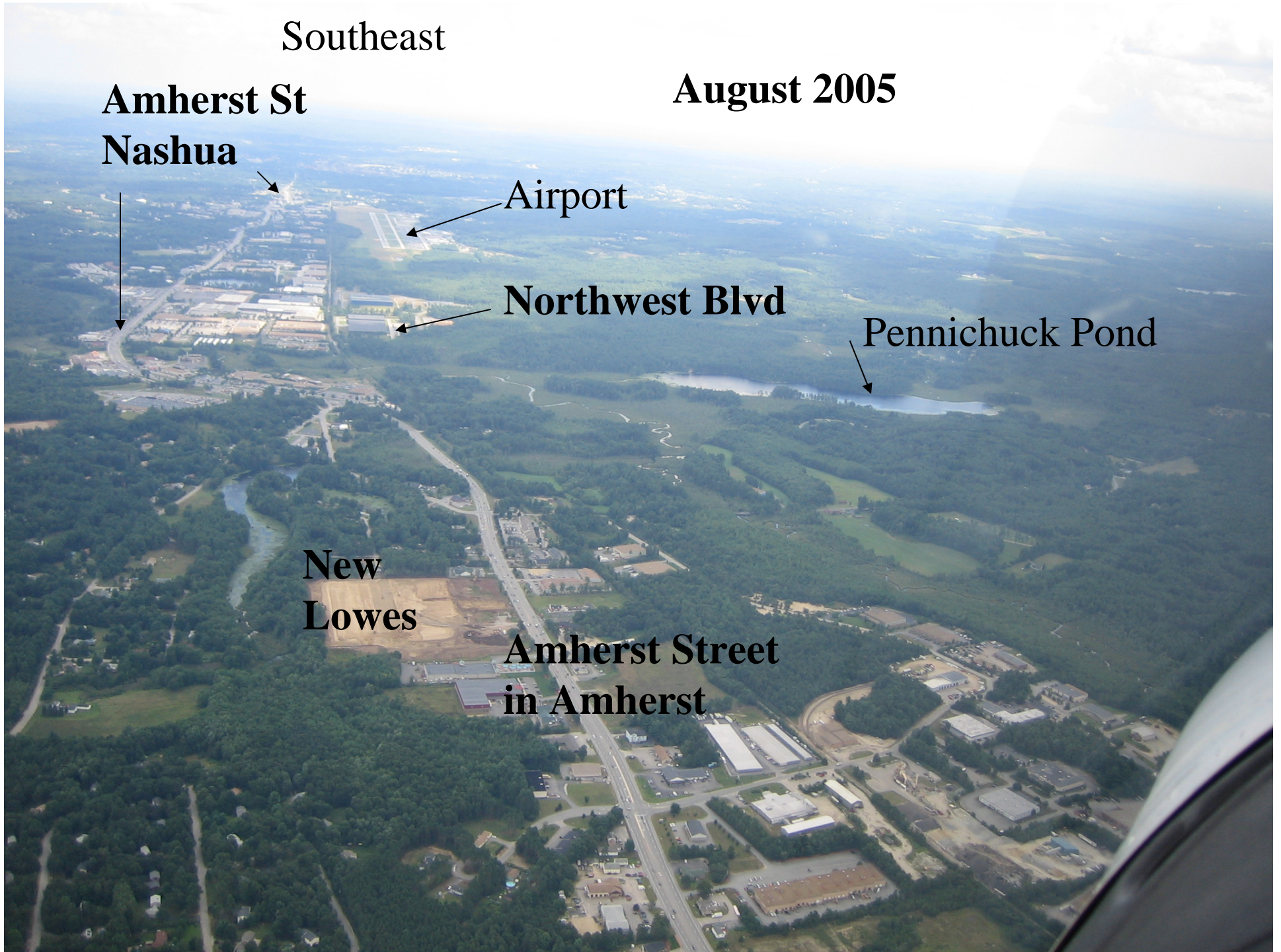
Airport

Northwest Blvd

Pennichuck Pond

**New
Lowes**

**Amherst Street
in Amherst**



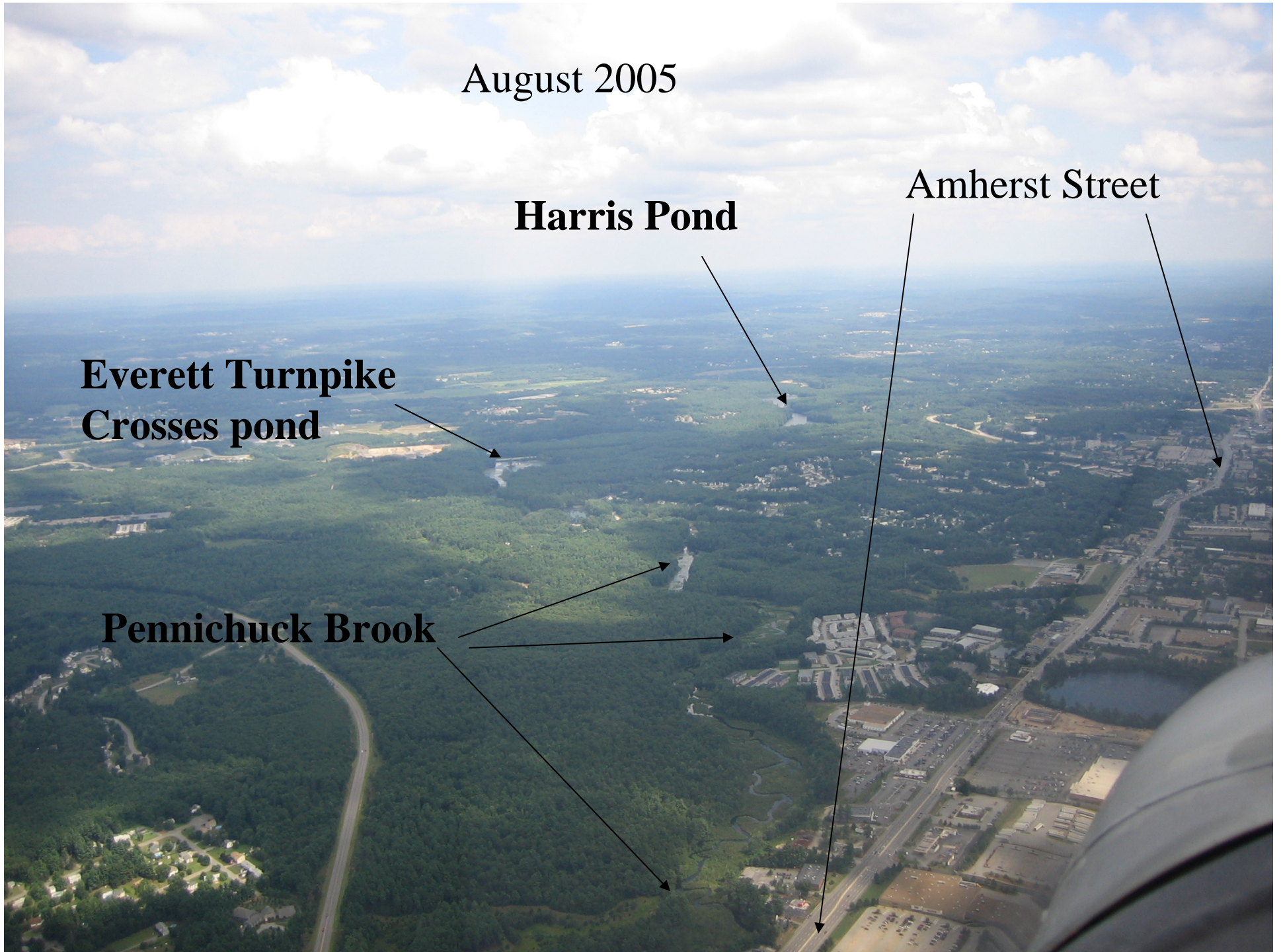
August 2005

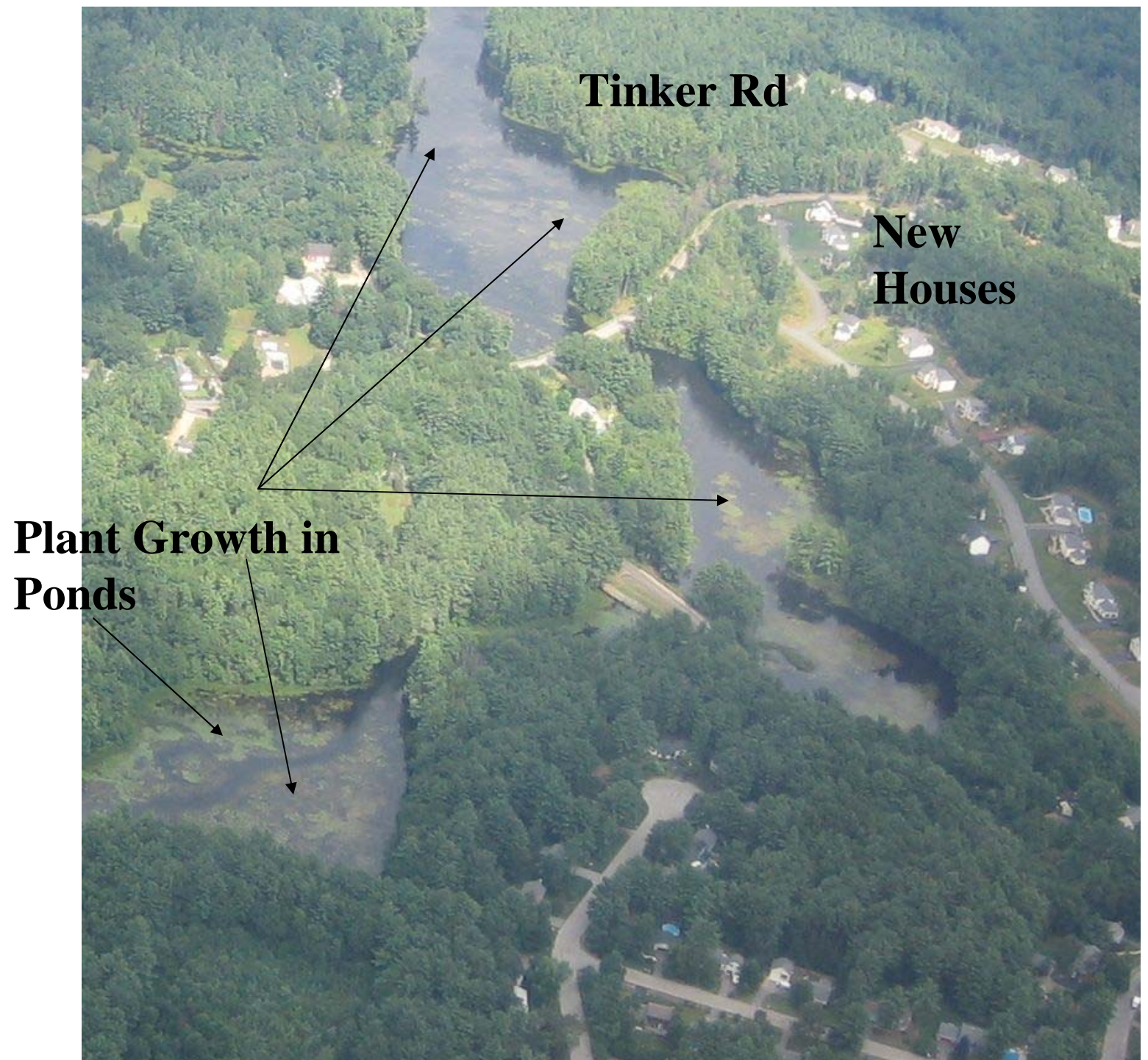
Harris Pond

Amherst Street

**Everett Turnpike
Crosses pond**

Pennichuck Brook



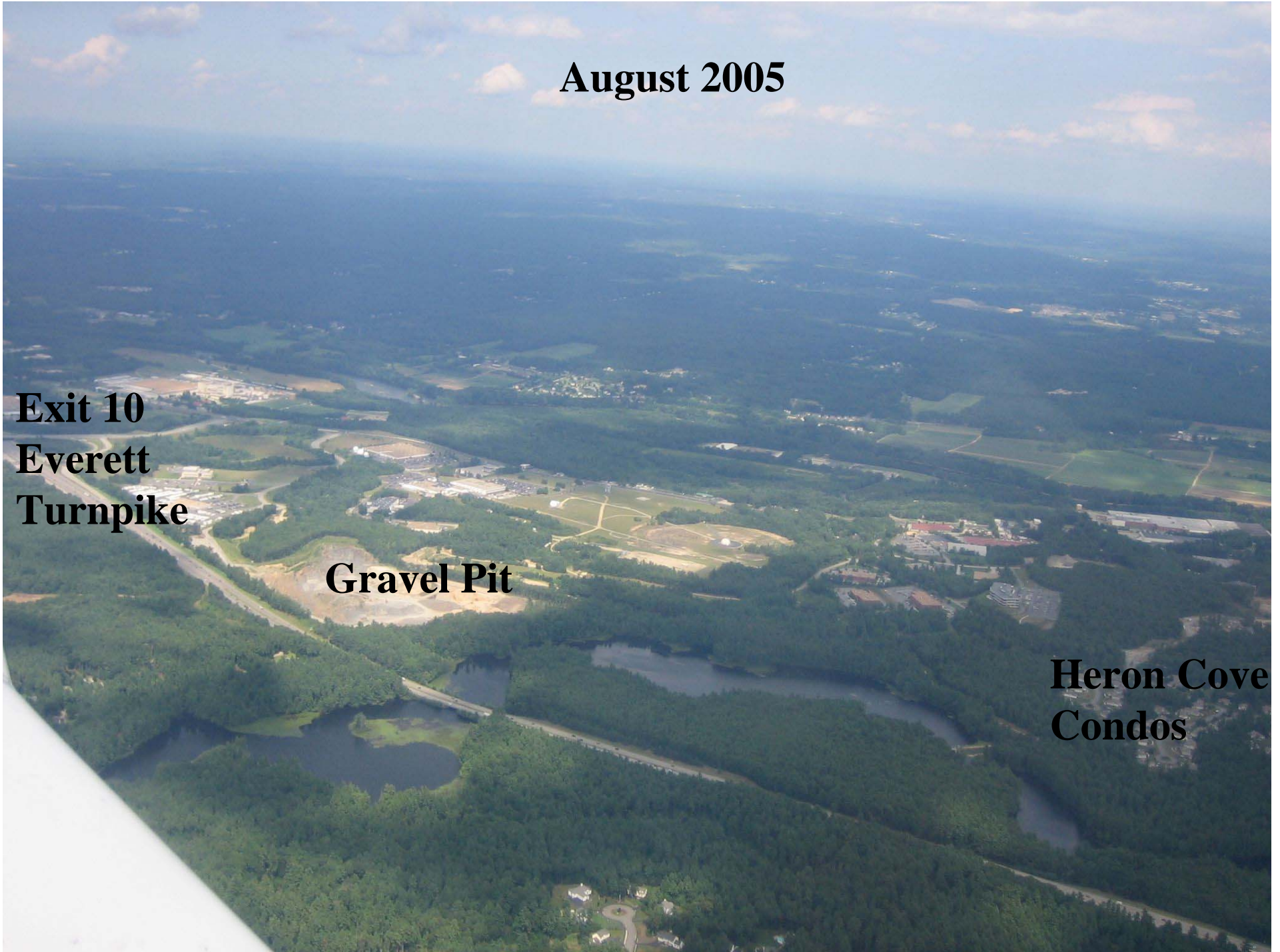


August 2005

**Exit 10
Everett
Turnpike**

Gravel Pit

**Heron Cove
Condos**



Reservoir

June 2002

**Bank eroded by
human activity**

**Trees in
Water**



Watershed
protection
land with
trails to the
banks of the
ponds.



Path is
clear to
see and
leads
to the
pond
(2005)



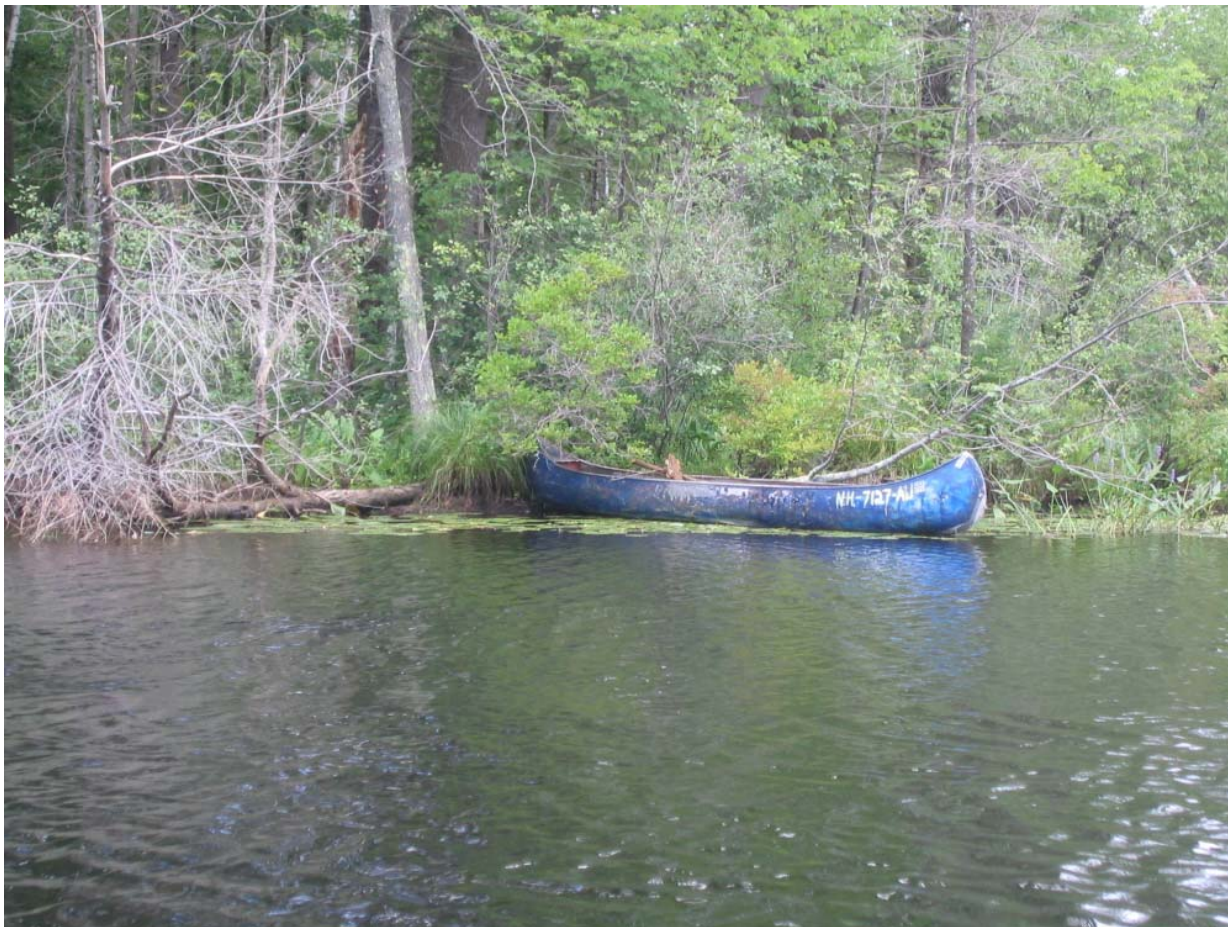
Path is a worn highway near
Manchester Street to reservoir



People fishing on the bank of reservoir near a rope swing



Canoes stashed in the woods for future use



Fences down from falling trees and not
well maintained



Trash in the water feeding into
Reservoir by Tinker Rd.
Beautiful isn't it!!



Reservoir with pretty slimy vegetation on the surface



Everett Turnpike
culvert letting
Boire Brook
water into
Reservoir



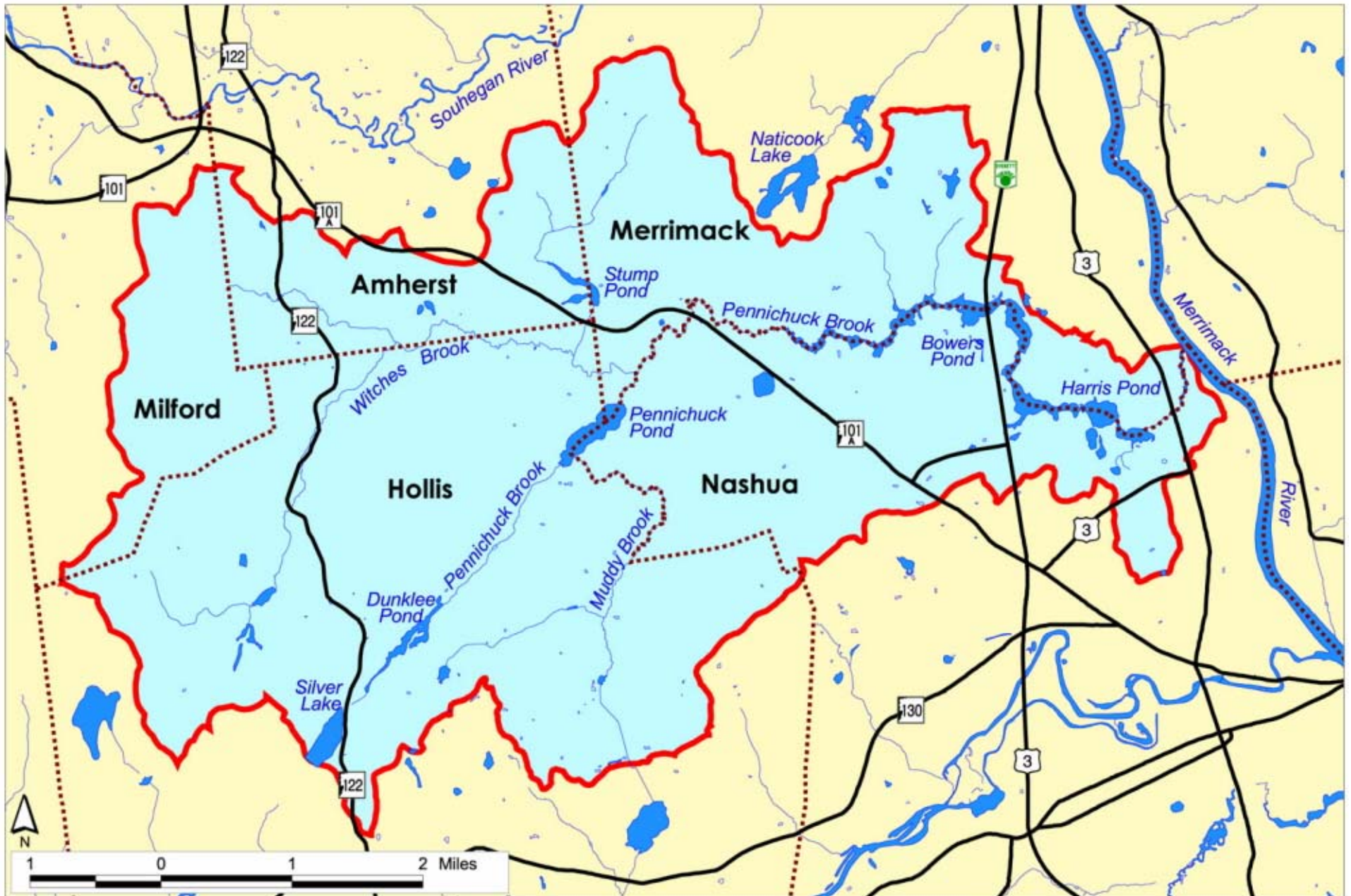
Plant Growth in Reservoir by Everett Turnpike



Beer bottle, computer monitor, and other trash dumped by water leading into Reservoir

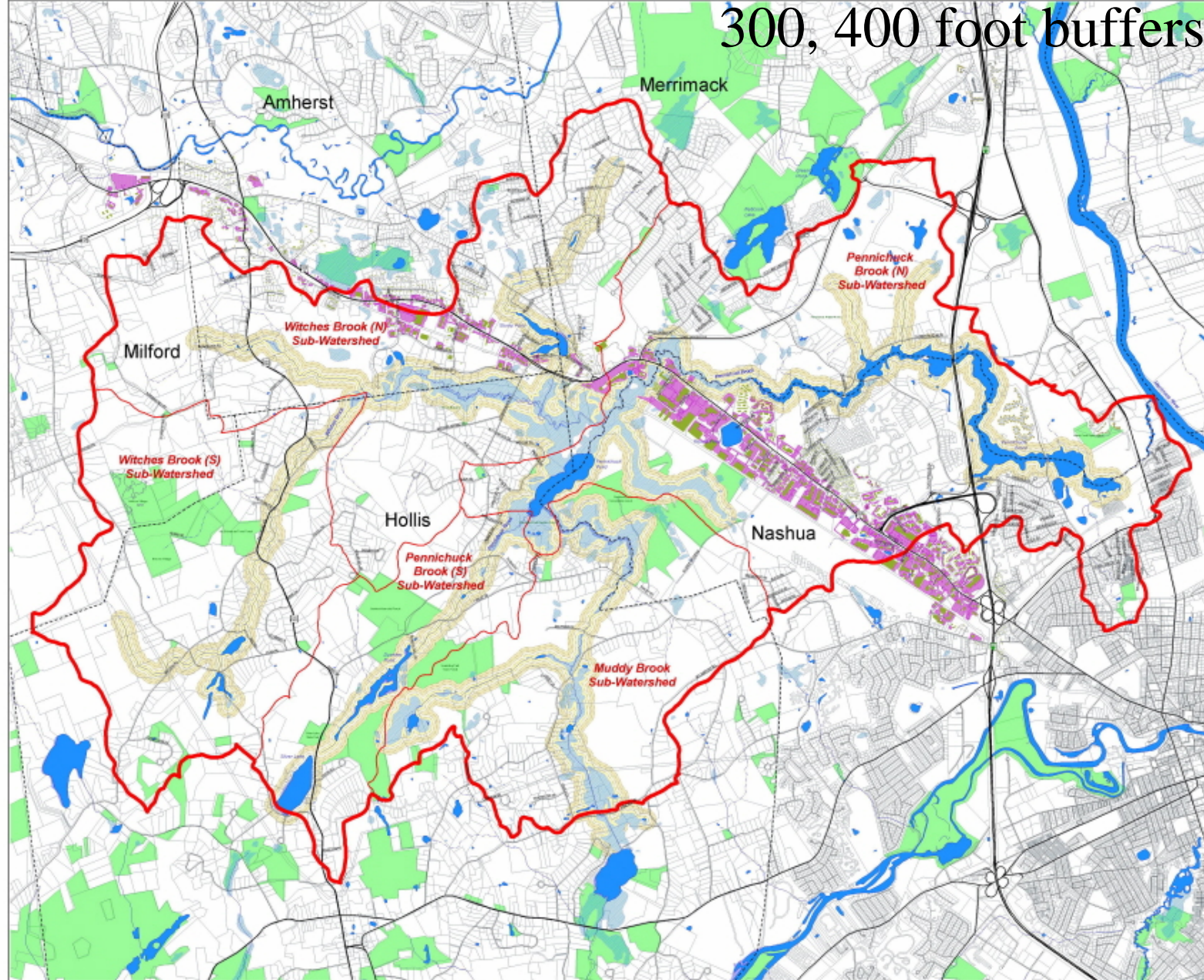


Watershed with town marked



**Pennichuck Brook Watershed
Potential Protective Buffer Zones Map, 2002**

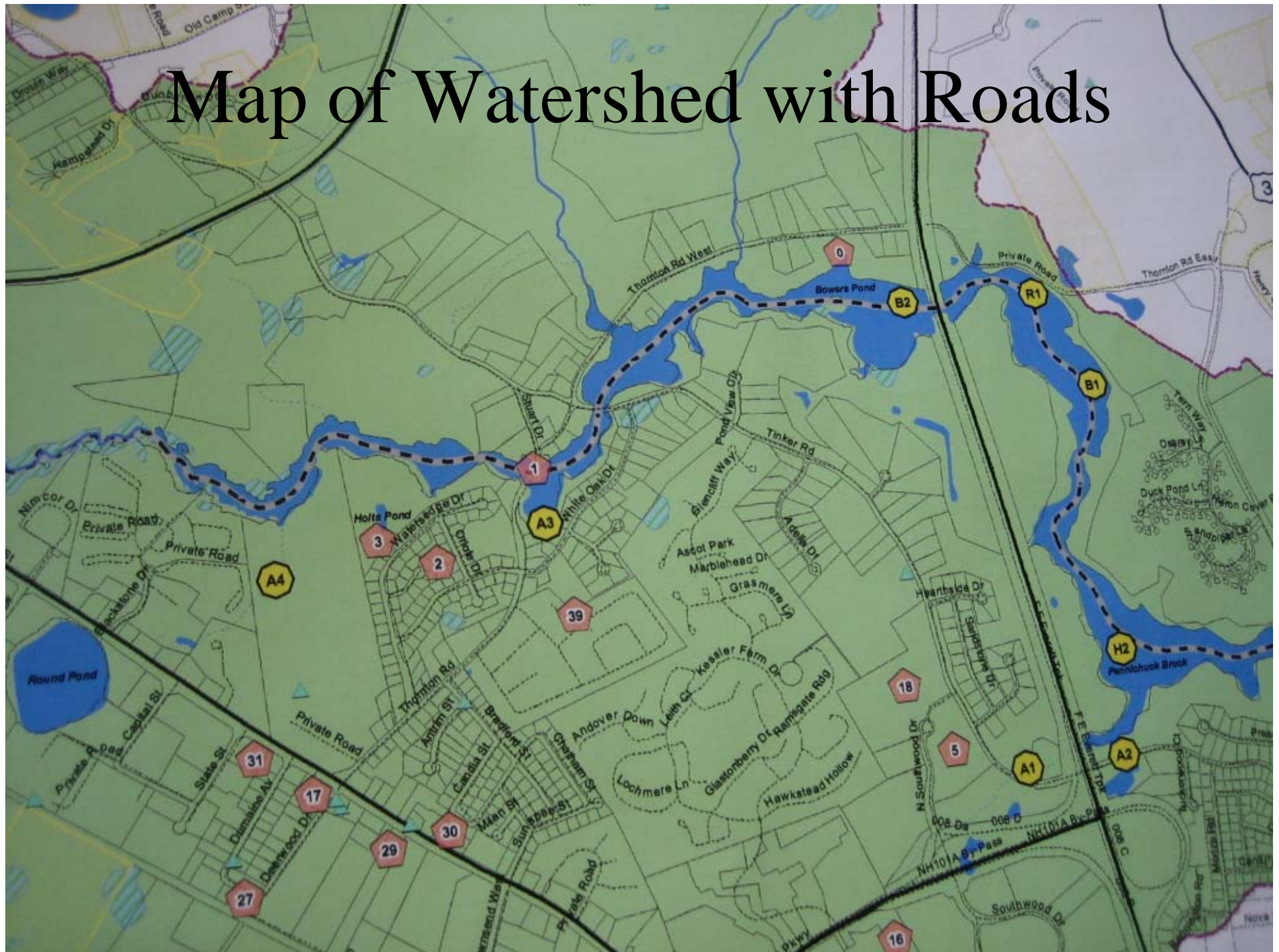
Tan areas are potential 100, 200,
300, 400 foot buffers



- Map Legend**
- Watershed and Subwatershed Boundaries
 - Buffer around Shoreline or Edge of Wetland
 - 200' Buffer
 - 400' Buffer
 - 100' Buffer Interval
 - Building Features (where available)
 - Buildings
 - Parking Lots
 - Driveways
 - Property Parcel Boundaries (approximate)
 - Permanent Open Space
 - Local or State roads
 - State Roads
 - Local Roads
 - Class VI
 - Waterbodies
 - Intermittent Stream
 - Rivers or streams
 - Wetland
 - Lakes or ponds
 - Municipal boundaries



Map of Watershed with Roads



Developments on each side of Reservoir at Manchester St

